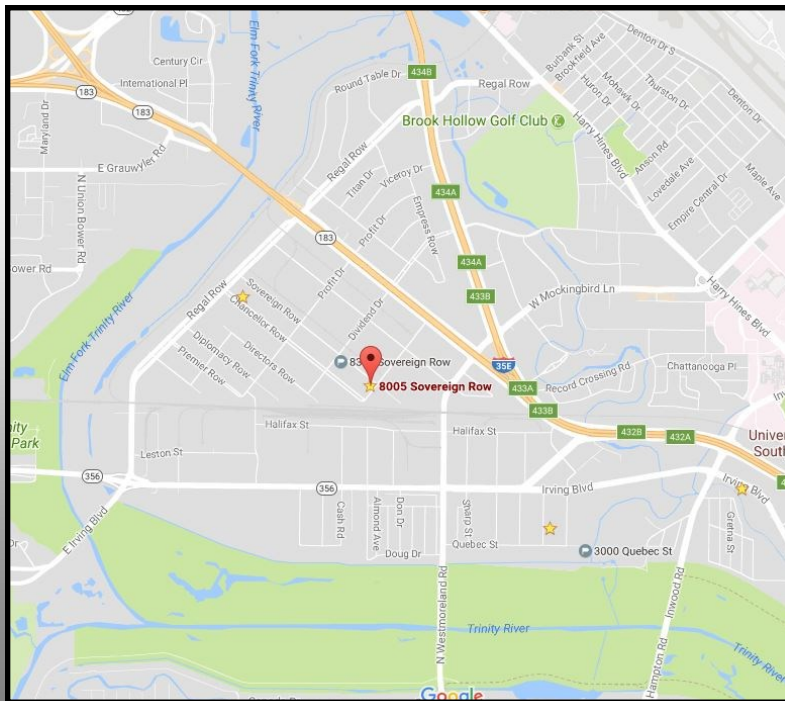


FOR LEASE: 7,000 SQUARE FEET
8005 SOVEREIGN ROW, DALLAS, TX 75247

INDUSTRIAL REAL ESTATE BROKERAGE

WWW.MERCER-COMPANY.COM



DETAILS

AVAILABLE FOR LEASE

- ◆ TOTAL SF: 7,000
- ◆ OFFICE SF: 700
- ◆ CLEAR HEIGHT: 14
- ◆ DOCK DOORS: 2

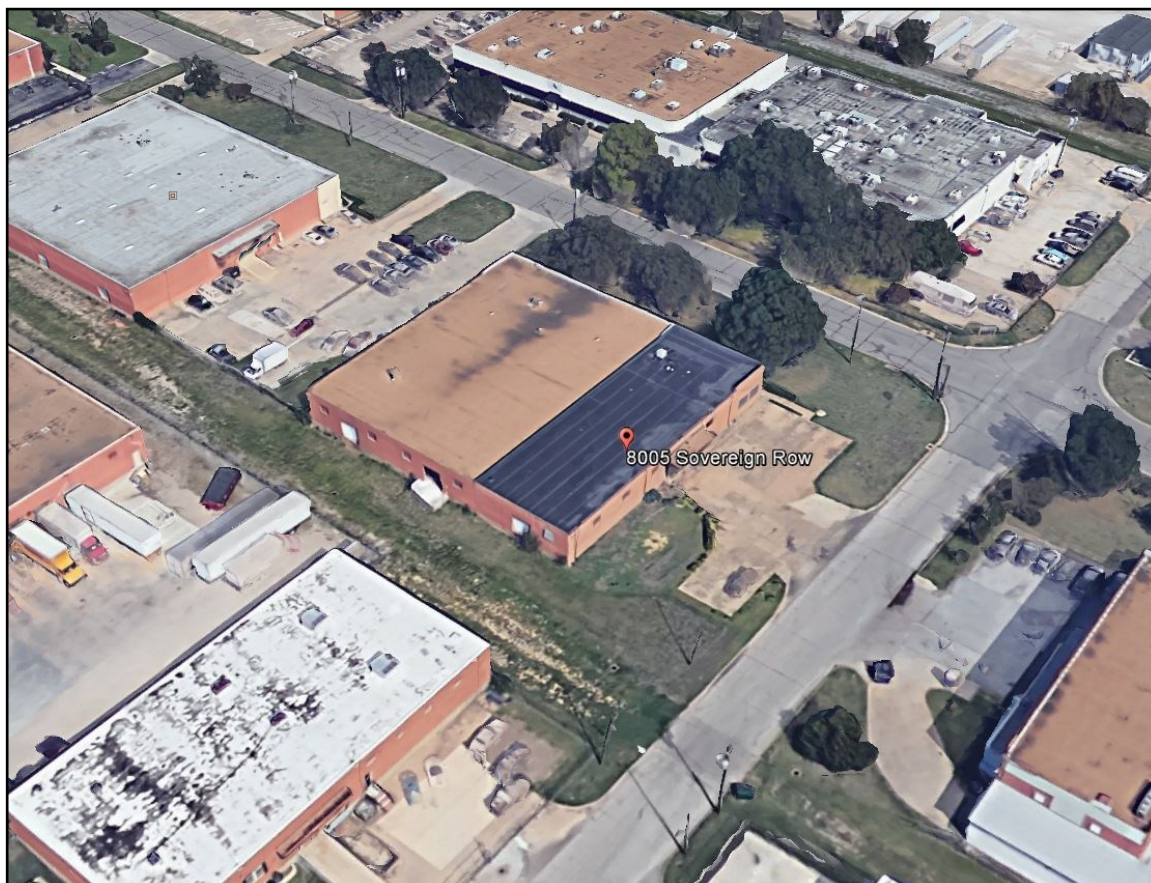
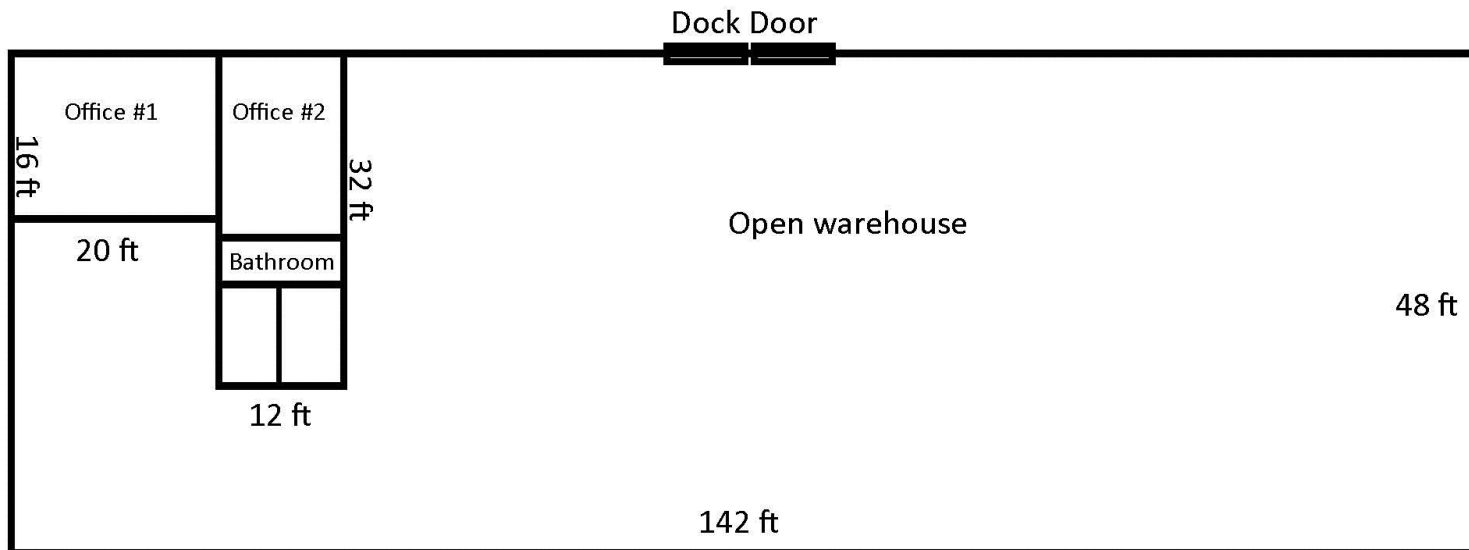
JEREMY MERCER
CELL 214.682.3447
JEREMY@MERCER-COMPANY.COM

FOR LEASE: 7,000 SQUARE FEET

8005 SOVEREIGN ROW, DALLAS, TX 75247

INDUSTRIAL REAL ESTATE BROKERAGE

WWW.MERCER-COMPANY.COM



The information contained herein has been given to us by the owner of the property or other sources we deem reliable. We have no reason to doubt its accuracy, but we do not guarantee it. All information should be verified before purchase or lease.